

# Student Discovery Master 4: What Will I Grow Up to Be?

Name \_\_\_\_\_ Date \_\_\_\_\_

Class \_\_\_\_\_ Names of partners \_\_\_\_\_

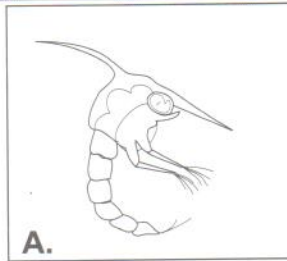
**Challenge:**

Match the plankter to the adult it will become!

Plankton includes many young or larval forms of animals that grow and change into adults that look very different from the larvae. Most planktonic larvae look somewhat alike because they have similar life styles. They are tiny and they can only eat tiny things. They have to stay up in the water. If they sank, they would not find food.

Discuss with other students what plankter grows into what adult. When you have made a decision, draw a line between the two. Continue until you have matched all the zoo-plankters with the adult forms.

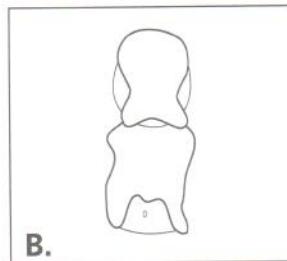
Your teacher will go over this with the class.



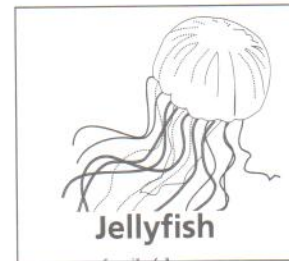
A.



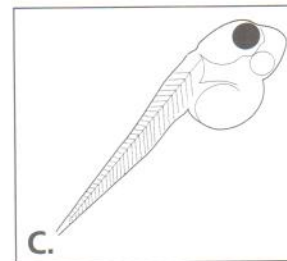
Seastar



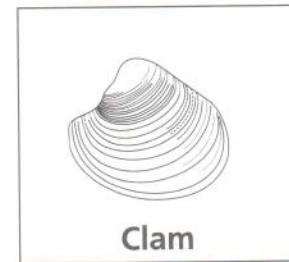
B.



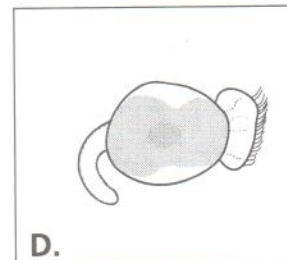
Jellyfish



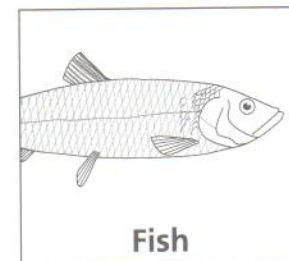
C.



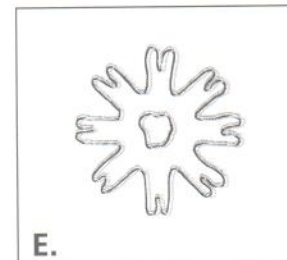
Clam



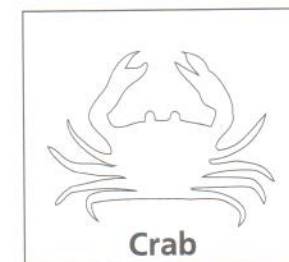
D.



Fish



E.



Crab

**ANSWER KEY:** A. Crab B. Sea star C. Fish D. Clam E. Jellyfish